

Wheeled Excavators E-SERIES

WX140E | WX155E SR | WX160E
WX175E SR | WX210E



CASE
CONSTRUCTION

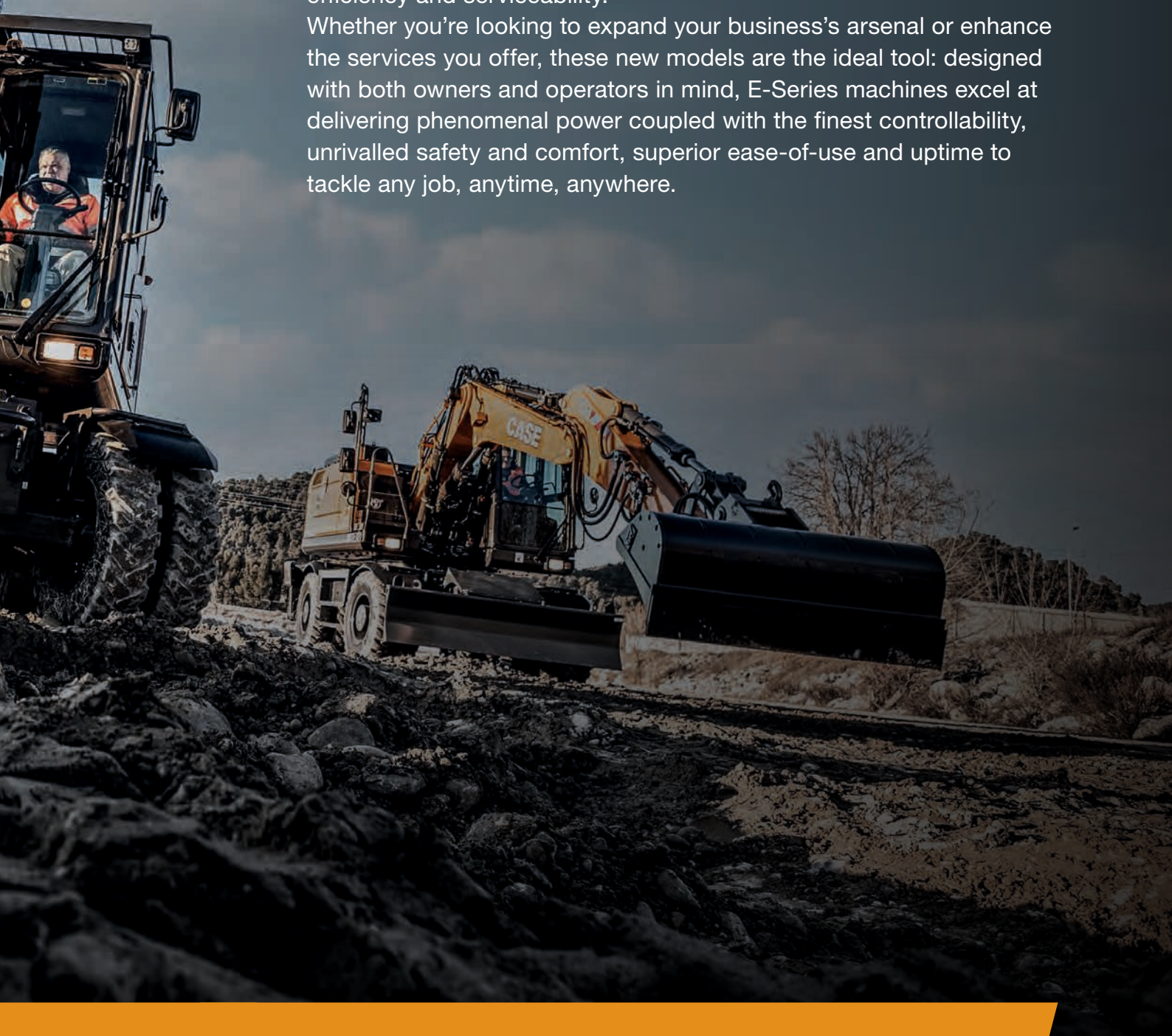


E-XPAND, E-NHANCE, E-XCEL.

INTRODUCING THE E-SERIES

The new E-Series Wheeled Excavators complete the CASE product range, offering invaluable benefits in terms of versatility, performance, efficiency and serviceability.

Whether you're looking to expand your business's arsenal or enhance the services you offer, these new models are the ideal tool: designed with both owners and operators in mind, E-Series machines excel at delivering phenomenal power coupled with the finest controllability, unrivalled safety and comfort, superior ease-of-use and uptime to tackle any job, anytime, anywhere.



WHY IS THE E-SERIES SO EFFECTIVE?

RELIABILITY AND PERFORMANCE AT YOUR DISPOSAL

Tackling practical necessities with smart solutions, E-Series Wheeled Excavators combine a multitude of valuable tools and functionality. With a focus on versatility, and featuring numerous customisable solutions, these innovative machines effortlessly adapt to your every need.

Cummins Stage V complaint engine, without EGR and compatible with synthetic fuels for increased fuel efficiency.

Eco gauge and Eco reports for maximum control over fuel consumption.

Heavy Duty, Standard and Eco power modes, plus customisable user mode for tailoring settings to the operator's every need.

Storage for 20 hydraulic tool configurations in the display for extra flexibility.

8" touchscreen main monitor with additional safety camera display for enhanced visibility.

Electronically controlled reversible fan for improved cooling efficiency.

Ergonomic proportional control joysticks with manual front axle lock and power boost for ease of use.





DISCOVER ALL
THE FEATURES



EXPAND YOUR BUSINESS WITH CASE WHEELED EXCAVATORS.

IT'S EASY LIKE COUNTING UP TO SIX!



1

DOWN-TO-EARTH RELIABILITY AND EFFICIENCY

Bosch Rexroth advanced flow sharing (LUDV) hydraulics (Kawasaki electric positive flow control on WX210E);
Eco mode, gauge and reports;
Compatible with biodiesel up to B20 plus HVO, GTL, CTL and BTL, as well as Panolin bio oil option.

2

EXCEPTIONAL VERSATILITY AND FLEXIBILITY

Three power modes plus customisable mode;
Ability to store attachment types and names in the display;
Broad choice of undercarriage configurations.

3

ALL-AROUND COMFORT AND CONTROLLABILITY

Joystick with proportional controls and optional joystick steering;
Auto digging brake option;
Ride control and boom flotation option;
Telescopic steering wheel.



WATCH THE FULL
WALKAROUND



4

VISIBILITY OF THE HIGHEST ORDER

8" touchscreen monitor plus
secondary camera display;
Rear camera with right-hand mirror
view and optional 360° CASE
Maximum View Monitor with human
recognition;
Parallel windscreen wiper.

5

DESIGNED WITH SAFETY IN MIND

FOPS level 2 head protection;
Rear radar detection;
Optional swing lock feature.

6

EFFECTIVE, EFFICIENT MAINTENANCE

No EGR, reducing ATS complexity;
Standard cooling reversible fan;
Cyclonic self-cleaning
pre-filter option;
1,000 hours service intervals for
fuel filters.



CLEANER, GREENER POWER.

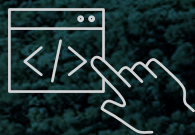
SUSTAINABILITY CHANGES THE WORLD

Each and every component contributes to creating a high-performing machine that can be operated according to your own needs and preferences, delivering maximum output when required or striving for fuel efficiency to improve running costs.



ECO FUNCTIONALITY

Achieve fuel savings with the help of the Eco fuelower mode, Eco gauge and regular Eco reports.



FOUR POWER MODES

Heavy Duty, Standard and Eco modes available, along with a customisable User mode.



CUMMINS ENGINE

Provides a reliable and efficient solution for meeting Stage V standards.



PANOLIN BIO- DEGRADABLE OIL

An eco-friendly oil alternative that still ensures excellent performance and longevity.

CLARITY AND PRECISION IN EVERY AREA.

THE ULTIMATE TECHNOLOGY IN THE CAB

With all-around comfort and controllability, and visibility of the highest order, E-Series Wheeled Excavators improve satisfaction, however tough the job. For instance, the pneumatic-suspension high-back Grammer seat with heating function enhances comfort whatever the weather.

TWO MONITORS

8" touchscreen main monitor with additional secondary display, ensuring the camera view is always on screen.

TELESCOPIC STEERING WHEEL

Provides easier adjustability and increased comfort when getting in and out of the cab.

AUTOMATIC DIGGING BRAKE

Keeps the machine stationary while working and moving regularly without the need for continual effort.

JOYSTICK STEERING

Improves comfort for driving the machine around the job site without getting the hands off of the joysticks.



LISTEN TO OUR
CUSTOMERS' VOICE



PROTECTION THAT INSPIRES CONFIDENCE.

SAFETY AND MAINTENANCE

Designed with safety and serviceability in mind, you can keep your E-Series Wheeled Excavators running with ease while putting your safety first. For instance, the reinforced cab structure is ROPS and FOPS compliant, with standard FOPS level 2 head protection.

ALARMS

The travel alarm improves safety when the machine is moving, while the overload alarm helps when handling loads.

REAR RADAR DETECTION

Available on conventional tail-swing models and works within a 10x10 metres area.

SERVICE INTERVALS

Recommended every 1,000 hours for the fuel filters and every 800 hours for the engine oil and oil filter.

REVERSIBLE FAN

An electronically controlled fan for improved radiator cleaning and cooling efficiency.





STANDARD AND OPTIONS

STANDARD EQUIPMENT

ENGINE

Cummins B4.5, 4-cycle, turbocharged, charge air cooled, electronic controlled diesel engine Stage V [B6.7 engine on WX210E]
Selective Catalytic Reduction (SCR)
Diesel Particulate Filter (DPF)
Diesel Oxidation Catalyst (DOC)
EGR-free
Wastegate turbocharger
Electronic fuel injection
High pressure common rail system
Auto engine preheat
Emergency stop switch
Remote oil filter
Dual-stage air filtration
Fuel cooler
800-hour engine oil and filter change interval
1,000-hour fuel filters change interval
24-volt system
Battery disconnect switch
Cooler with removable dust net
Fuel filter + fuel prefilter with water accumulation indicator
Electric refueling pump
Reversible cooling fan electronically controlled
Cruise control

FUEL ECONOMY SYSTEMS

Eco mode
Auto idle
One-touch idle
Idle shutdown
Eco gauge
Eco reports

HYDRAULICS

Auto or manual power boost
2-speed 4-wheel drive hydrostatic transmission
Auto travel speed change
Creep speed
3 selectable power modes with additional user selection mode
3 selectable work operation modes

Intelligent Power Control modes [WX210E]
Lifting mode [WX210E]
Customizable boom/arm speed [WX210E]
Overload warning device
Boom and arm safety valves
ISO pattern controls
Pre-set auxiliary pump settings
Switch controlled auxiliary selection
Auxiliary valve
Multifunction (hammer/shears) high flow circuit with electrical proportional control
FNR control switch
Automatic swing brake
Auto safety lock
Oil cooler
5,000-hour hydraulic oil change interval
2,000-hour hydraulic tank suction strainer change interval
Hydraulic quick coupler provision
Hydraulic fluid supply port with air breather

UPPERSTRUCTURE

ISO mirrors
Handrail – RH access
ISO guard rails
Cab suspension with silencer blocks
Lifting eyes for counterweight
Lockable fuel cap, service doors and toolbox
Rear view safety camera

OPERATOR STATION

RH rear mirror camera
ROPS protection
FOPS guard OPG level 2
Tempered safety glass with laminated windshield
Sun visor
A/C, heating and defrosting with automatic control
Telescopic steering wheel
Cup holder & sunglasses case
Adjustable air suspension tiltable and heated seat
Tiltable joystick console

Seat belt with fasten detection
Adjustable armrests
USB radio with MP3 player and hands-free
Bluetooth kit
Multifunction touchscreen color monitor (8") with Android mirroring
Secondary camera display
16 selectable languages for monitor
Jog dial
Anti-theft system (start code system)
Split type floor mat
12-volt and 24-volt electric sockets
6 LED work lights (2 cab roof, 1 LH boom, 1 RH boom, 1 cab rear, 1 rear camera)
Parallel double windshield wiper
Hot & cool box, document holder & luggage space

ATTACHMENTS

Mono boom 4.6 m [WX140E / WX155E SR], 5.0 m [WX160E / WX175E SR] or 5.7 m [WX210E]
2-piece boom 4.7 m [WX140E / WX155E SR], 5.1 m [WX160E / WX175E SR] or 5.4 m [WX210E]
Arm 2.45 m [n.a. on WX210E] or 2.70 m [WX210E]
Attachment types and names storable in the display
Selectable activation type (push, proportional, detent)

UNDERCARRIAGE

Front oscillating and rear rigid heavy duty axles
Front axle cylinders safety valves
Tube twin tires with stone ring 9.00-20 PR 14 [WX140E] or 10.00-20 [PR 14 on WX140E, PR 16 on WX155E SR / WX160E / WX175E SR / WX210E]
Rear blade
Lashing points
LH side toolbox
Wheel chocks

OPTIONAL EQUIPMENT

ENGINE

Engine pre-filter self-cleaning cyclonic type

HYDRAULICS

Clamshell circuit
Low-flow circuit, proportional control
Fine swing control
Swing lock control
Joystick steering control
Automatic digging brake
Ride control with boom flotation [n.a. on WX210E]
Travel speed limiter (20 km/h) [n.a. on WX210E]
Panolin bio oil
ISO/SAE pattern control change valve

UPPERSTRUCTURE

Heavier counterweight [only WX140E Mono / WX160E Mono / WX210E Mono]

Customized paint job

OPERATOR STATION

Front cab guard - vertical bars (OPG level 2) including 2 extra cab front lights
CASE Maximum View Monitor - 360° view with four cameras enabling pedestrian recognition and warning
Rear radar detection [WX140E / WX160E / WX210E]
Smart key
Cab roof LED beacon

ATTACHMENTS

Arm 2.00 m / 2.60 m [n.a. on WX210E] or 2.40 m / 2.92 m [WX210E]
Arm 3.10 m [only WX140E Mono / WX160E Mono]

UNDERCARRIAGE

Wide axles [WX160E / WX17E SR / WX210E]
Solid twin tires 9.00-20 [WX140E] or 10.00-20 [excluding WX140E]
Plastic fenders steerable on front axles [n.a. on WX210E]
Trailer hitch preparation [n.a. on WX210E]
Steel fenders [WX210E]
Rear stabilizers [n.a. on WX210E]
Rear blade with front stabilizers
Front blade with rear stabilizers
Front and rear blade
Front and rear stabilizers
Rear blade or stabilizers can include also front bucket rest [excluding WX140E] or grab bucket rest [standard on WX210E]
RH side toolbox [n.a. on WX210E]

Standard and optional equipment shown can vary by country.

SPEC SHEET



DEEP DIVE INTO THE FULL SPECS

		WX140E	WX160E	WX155E SR	WX175E SR	WX210E
OPERATING WEIGHT (REAR BLADE)						
Mono Boom	kg	14900	17580	16870	Model n.a.	21180
2PB	kg	15860	18390	17170	18820	22510
ENGINE						
Emission		Stage V				
Model		Cummins B4.5				Cummins B6.7
Number of Cylinders		4	4	4	4	6
Net Power	kW	127	127	127	127	127
Max. Torque	Nm	780	780	780	780	881
HYDRAULIC						
System		Load Independent Flow Sharing (LUDV)				Open Center (EPFC)
Max. Pressure	MPa	37.3	37.3	37.3	37.3	37.3
Max. Flow	l/min	230	260	260	260	2 x 208
DIMENSIONS						
Tail Swing Radius	mm	2170	2250	1800	1830	2740
Wheel Base	mm	2600	2600	2600	2600	2800
CAPACITIES						
Fuel Tank	liter	250	250	200	200	310
AdBlue Tank	liter	48	48	48	48	48
Hydraulic System	liter	204	204	187	187	340
LIFTING CAPACITY (2PB, STD ARM)						
Front (Blade Up, 6m Reach, Ground Level)	kg	3590	4390	3990	4310	6270
Side (Blade Up, 6m Reach, Ground Level)	kg	1980	2480	2180	2350	4170
DIGGING FORCE						
Bucket - Normal	kN	103	115	103	115	151
Bucket - Power Boost	kN	112	125	112	125	164
Arm (STD) - Normal	kN	66	77	66	70	114
Arm (STD) - Power Boost	kN	72	84	72	77	124
SWING						
Speed	rpm	9.5	9.5	9.5	9.5	10.7
Torque	Nm	31600	36200	39100	39100	63200
TRAVEL						
Speed - 1 st	km/h	10	10	10	10	10
Speed - 2 nd	km/h	40	35	35	35	38
Drawbar Pull	kN	80	103	91	103	119
NOISE						
External	dB(A)	96	99	100	100	96
Internal	dB(A)	71	72	71	71	68



BUILDING ON OUR HERITAGE.

Since 1842, at CASE Construction Equipment we have lived by an unwavering commitment to build practical, intuitive solutions that deliver both efficiency and productivity.

The vast CASE dealers' network is always ready to support and protect your investment.

At the end of the day, we do what's right for our customers and our communities so that they can count on CASE.

CNH Industrial
Deutschland GmbH
Case Baumaschinen
Benzstr. 1-3 - D-74076 - Heilbronn
DEUTSCHLAND

CNH Industrial
Maquinaria Spain, S.A.
Avenida Aragón 402
28022 Madrid
ESPAÑA

CNH Industrial France, S.A.
16-18 Rue des Rochettes
91150 Morigny-Champigny
FRANCE

CNH Industrial Italia Spa
Lungo Stura Lazio 19
10156, Torino
ITALIA

CASE Construction Equipment
Cranes Farm Rd
Basildon - SS14 3AD
UNITED KINGDOM

NOTE: Standard and optional fittings can vary according to the demands and specific regulations of each country. The illustrations may include optional rather than standard fittings - consult your Case dealer. Furthermore, CNH Industrial reserves the right to modify machine specifications without incurring any obligation relating to such changes.

Conforms to directive 2006/42/EC

CASECE.COM
00800-2273-7373

The call is free from a land line.
Check in advance with your Mobile Operator if you will be charged. Toll free number not available from all calling areas.